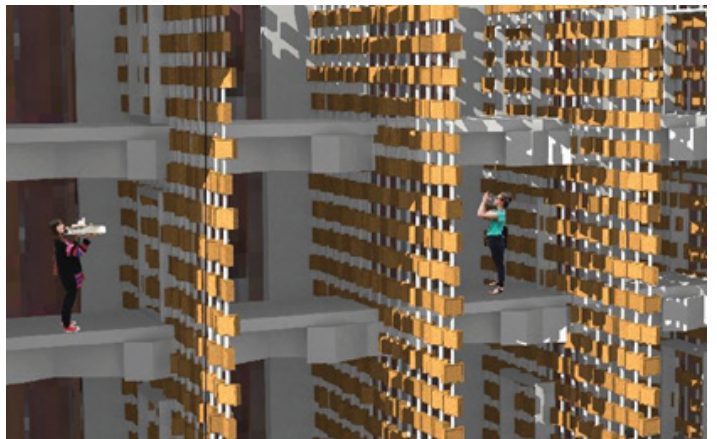


# COLOR TRANSFORMATION FROM WATER

PIYA ISELIN

Building materials immediately transform color with exposure to outdoor environmental conditions, or natural 'weathering,' specifically water exposure, humidity and wetness- highlighting the passage of time (Leatherbarrow & Mostafavi, 2001). In Pullman, the key influence for this design was the aesthetic interaction of water on external building materials in the Palouse- before, during and after rainfall.

This project aims to understand beautiful methodologies Architects and designers can use to celebrate color change in design materials, with water. Through this intentional application, water can showcase coloration on materials in a beautiful way, thus helping balance the old and new. The proposed Structural Screen System allows for ongoing material exploration studies to take place in interdisciplinary programs, allowing for a year-round art work for Carpenter Hall. The interactive free-standing structural screen system allows for materials to be inserted in the small operable testing frames.



Carpenter: Material Testing Screen System Proposal